

SCAN THE QR CODE BELOW
FOR THE OFFICIAL TESLA
HELP VIDEOS



©2023 Avis Budget Group, Inc.

WARNING



DO NOT use an automatic car wash.



Return the Tesla with at least 70% charge.



Return the Tesla to your pickup location.

TESLA GUIDE



AVIS[®]
PLAN ON US[™]

Budget[®]


1 UNLOCK/LOCK DOOR

Hold the keycard against the driver door frame below the circle to unlock/lock the door.

NOTE: Locking the vehicle will also turn the car off.



4 PUT THE VEHICLE IN DRIVE

Using the stalk on the right of the steering wheel, press the brake.

For **DRIVE**, push down.

For **REVERSE**, push all the way up.

For **NEUTRAL**, push halfway up.

Observe the change on the top right of the screen.



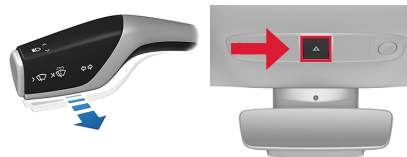
5 PARK & LOCK THE VEHICLE

For **PARK**, use the right stalk & push the button. To **TURN OFF** the car, exit the vehicle & lock the door from step 1.



6 HAZARD LIGHTS & HIGH BEAMS

HAZARD LIGHTS are above the rear-view mirror. For **HIGH BEAMS**, push the left stalk forward.



7 CHARGING LOCATIONS

Using the touchscreen, locate your current position, then tap **Map Search > Charging** to display nearby Tesla & third-party chargers.

8 CHARGE THE VEHICLE

OPEN THE PORT: On the touchscreen, tap **Car Icon > Charge Port Icon** (lightning bolt). **OR** Press the bottom of the charge port door when the vehicle is unlocked.

PLUGGING IN: When the connector is properly inserted, charging begins automatically.

CHARGING: Charge port light is blinking green when in progress.

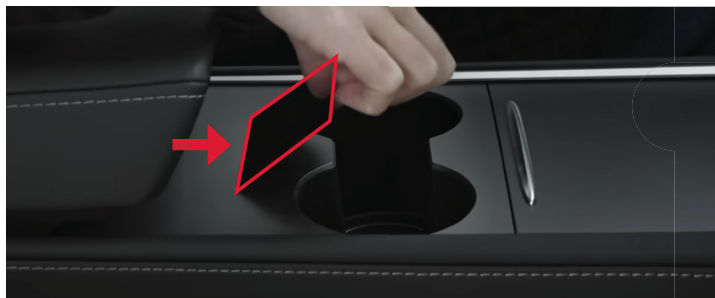
END CHARGING: Unlock the vehicle. Press & hold the button on the connector handle to release the lock. Charge port will close automatically, or you can press it gently to close it.

CAUTION: DO NOT try to force the charge port door open.



2 START THE VEHICLE

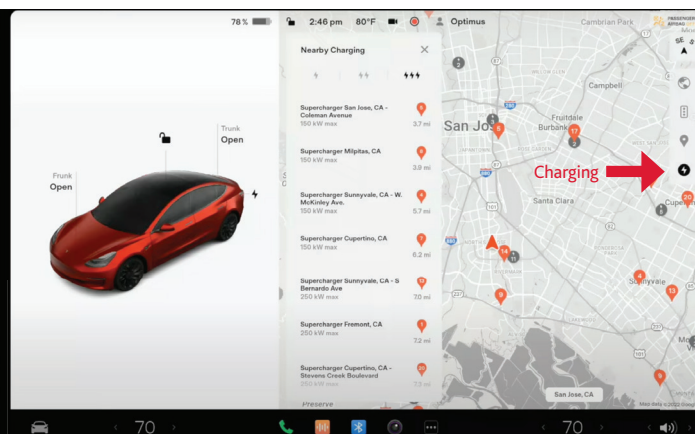
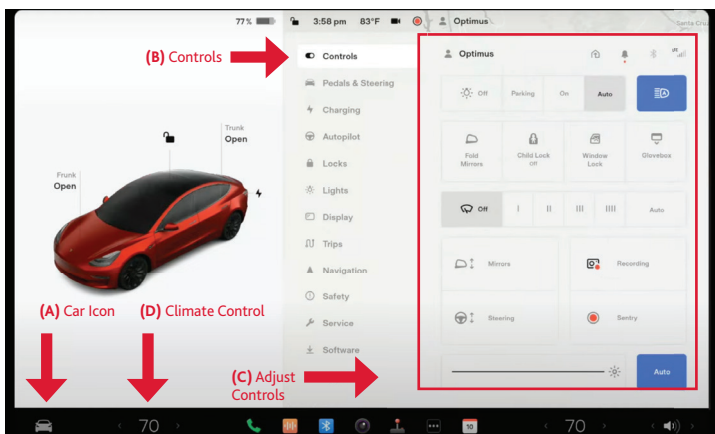
Put your foot on the brake pedal & place keycard on the center console behind the cup holders.



3 REVIEW CONTROLS BEFORE DRIVING

Review & adjust settings for headlights, wipers, side mirrors & steering wheel. Tap **(A) Car Icon > (B) Controls > (C) Adjust Controls**. Tap **(D)** for **Climate Control**.

Regenerative braking has the vehicle slowing down as the foot releases the accelerator pedal. To adjust this on the touchscreen, tap **(A) Car Icon > Pedals & Steering > Stopping Mode**.



9 IDLE FEES FROM TESLA STATIONS

Beware of idle fees at Tesla Superchargers. The customer is charged a per minute fee if the vehicle remains plugged in after the vehicle has been charged to the set limit. Scan the QR code to learn more.



10 USE A NON-TESLA CHARGER

PLUGGING IN: Use the adapter, which can be found in the trunk.

END CHARGING: Press & hold the button on the connector handle & wait for the Tesla icon to turn white. Wait a moment, remove the connector handle & adapter together.

